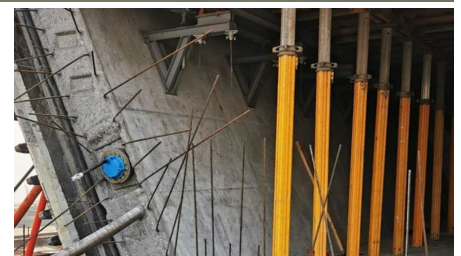


## 2nd Niger River Brücke



### SHORT DESCRIPTION

The 2nd Niger River Bridge in southern Nigeria consists of a 1.6 km long prestressed concrete superstructure, which is built using the incremental launching method, cantilevered cantilever construction and on falsework.

### THE PROJECT

The bridge connects Anambra State and Delta State. The superstructure is pre-tensioned using BBV L15 tendons, with a total of more than 2,000 t of prestressing steel being installed.

### SERVICES IN DETAIL

Material and equipment delivery

Supervision

approx. 2,000 t prestressing steel

## FACTS

---

<b>Location</b>	zw. Anambra State und Delta State, Nigeria , Nigeria
<b>Status</b>	Under construction
<b>Start of construction</b>	January 2019
<b>Completion</b>	December 2021
<b>Building owner</b>	Federal Republic of Nigeria
<b>Contracting entity</b>	Julius Berger International
<b>Planning</b>	LAP

## SERVICE PROVIDED

---

Post-tensioning system

Bridge construction



---

<https://www.bbv-systems.com/en/projects/detail/ref/2nd-niger-river-bridge/>

Creation: 04.04.2025 06:38