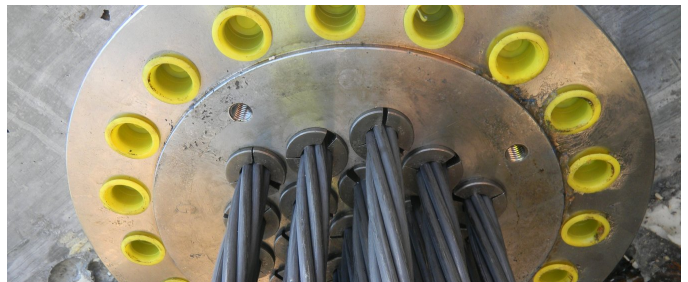
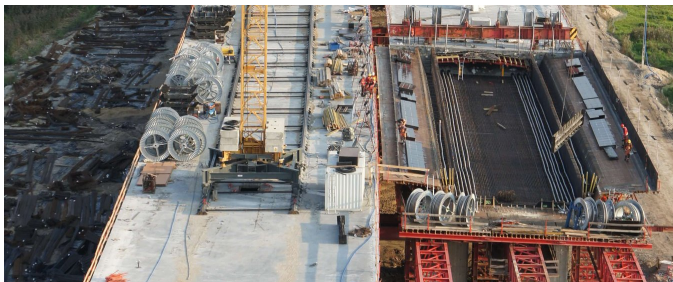


Brücke E221



SHORT DESCRIPTION

The E221 project is located in Peławice in Poland. The bridge consists of two adjacent superstructures.

THE PROJECT

The bridge has a total length of 1,540 m. It is part of the A1 motorway from Toruń to Stryków. As a subcontractor to the construction company STRABAG, BBV Systems was responsible for the post-tensioning work, which included the installation of internal and external tendons.

The superstructures were built using advancing scaffolding. The use of advancing equipment made it possible to build a 45-meter-long bridge section per superstructure and per week. In total, over 2,000 t of BBV L19 tendons were installed for the internal prestressing, approx. 26 t per construction section.

In order to be able to cope with this amount in the shortest possible time, prefabricated tendons were used. In the BBV

Systems production hall in Gdansk, 52 tons of tendons were prefabricated a week to ensure that the construction site was supplied with prefabricated tendons on time. The external tendons of the type BBV L19E with a total length of almost 3,000 m were produced on the construction site.

FACTS

Location	Pęcławice , Poland
Status	completed
Start of construction	April 2011
Completion	August 2012
Building owner	GODKIA Łódź
Contracting entity	STRABAG /DYWIDAG
Planning	Stahler & Knoppik

SERVICE PROVIDED

Post-tensioning system

Bridge construction



<https://www.bbv-systems.com/en/projects/detail/ref/bridge-e221/>

Creation: 31.03.2025 21:51